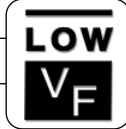


High Current/Low V_F Schottky Diodes

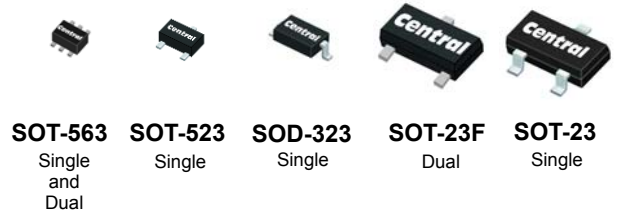
features



- High Current: 0.5 Amps
- Low V_F : 0.31 Volts Typ. @ 100mA
- Available in five space saving SMD packages

description

Central Semiconductor's new High Current/Low V_F Schottky diodes have been designed for applications requiring a higher forward current, while maintaining a low forward voltage drop. These devices have a maximum V_{RRM} of 40 volts and a maximum V_F of 0.47 volts @ 500mA. To meet a wide variety of circuit board requirements, Central manufactures this low V_F series in five different SMD packages. Selected, Special or Custom requests are always welcome. Central also manufactures Medium Current/Low V_F Schottky diodes in SOD-323, SOD-523 and SOT-523 packages. For further information contact Central's Sales Department at (631) 435-1110.



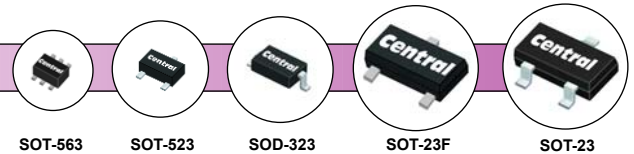
SOT-563 Single and Dual
SOT-523 Single
SOD-323 Single
SOT-23F Dual
SOT-23 Single

Sample devices are available upon request.

selection guide

High Current/Low V_F Schottky Diodes

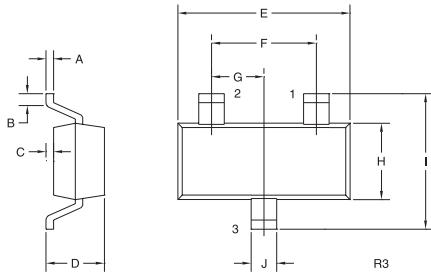
TYPE NO.	DESCRIPTION	PINOUT (TOP VIEW)	V_{RRM} (V) MAX	I_F (mA) MAX	V_F		I_F (mA)	C_T (pF) MAX	CASE SIZE
					(V) TYP.	(V) MAX			
CMPSH05-4	Single Diode in a SOT-23		40	500	0.22 0.31 0.43	0.27 0.35 0.47	10 100 500	50	 SOT-23
CMPSH05-4C	Dual, Common Cathode Diodes in a SOT-23F		40	500	0.22 0.31 0.43	0.27 0.35 0.47	10 100 500	50	 SOT-23F
CMDSH05-4	Single Diode in a SOD-323		40	500	0.22 0.31 0.43	0.27 0.35 0.47	10 100 500	50	 SOD-323
CMUSH05-4	Single Diode in a SOT-523		40	500	0.22 0.31 0.43	0.27 0.35 0.47	10 100 500	50	 SOT-523
CMLSH05-4	Single Diode in a SOT-563		40	500	0.22 0.31 0.43	0.27 0.35 0.47	10 100 500	50	 SOT-563
CMLSH05-4DO	Dual, Opposing Diodes in a SOT-563		40	500	0.22 0.31 0.43	0.27 0.35 0.47	10 100 500	50	 SOT-563



High Current/Low V_F Schottky Diodes

Mechanical Specifications

SOT-23



SYMBOL	INCHES		MILLIMETERS	
	MIN	MAX	MIN	MAX
A	0.003	0.007	0.08	0.18
B	0.006	-	0.15	-
C	-	0.005	-	0.13
D	0.035	0.043	0.89	1.09
E	0.110	0.120	2.80	3.05
F	0.075	-	1.90	-
G	0.037	-	0.95	-
H	0.047	0.055	1.19	1.40
I	0.083	0.098	2.10	2.49
J	0.014	0.020	0.35	0.50

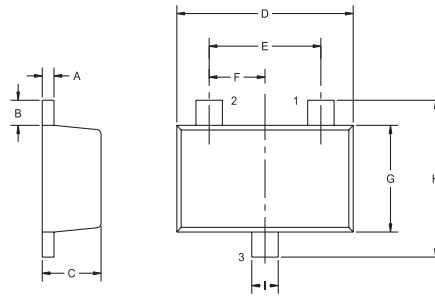
SOT-23 (REV: R3)

CMP5H05-4
LEAD CODE:

- 1) ANODE
- 2) N/C
- 3) CATHODE

MARKING
CODE: C054

SOT-23F



SYMBOL	INCHES		MILLIMETERS	
	MIN	MAX	MIN	MAX
A	0.004	0.008	0.10	0.20
B	0.012	0.020	0.30	0.50
C	0.031	0.039	0.80	1.00
D	0.110	0.118	2.80	3.00
E	0.075	-	1.90	-
F	0.037	-	0.95	-
G	0.059	0.067	1.50	1.70
H	0.091	0.098	2.30	2.50
I	0.014	0.018	0.35	0.45

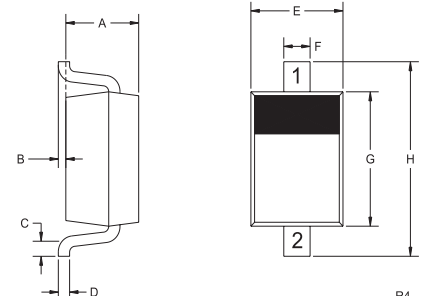
SOT-23F (REV: R1)

CMP5H05-4C
LEAD CODE:

- 1) ANODE D2
- 2) ANODE D1
- 3) CATHODE D1, D2

MARKING
CODE: C405

SOD-323



SYMBOL	INCHES		MILLIMETERS	
	MIN	MAX	MIN	MAX
A	0.031	0.039	0.80	1.00
B	0.000	0.004	0.00	0.10
C	0.008	-	0.20	-
D	0.004	0.007	0.11	0.19
E	0.045	0.053	1.15	1.35
F	-	0.014	-	0.35
G	0.063	0.071	1.60	1.80
H	0.094	0.102	2.40	2.60

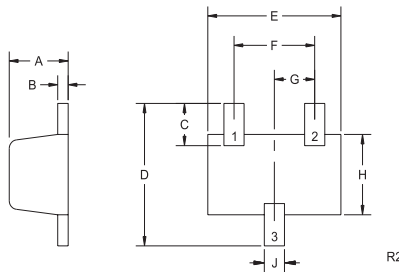
SOD-323 (REV: R4)

CMD5H05-4
LEAD CODE:

- 1) CATHODE
- 2) ANODE

MARKING
CODE: C55

SOT-523



Bottom View

SYMBOL	INCHES		MILLIMETERS	
	MIN	MAX	MIN	MAX
A	0.023	0.031	0.58	0.78
B	0.002	0.008	0.04	0.20
C	0.013	0.021	0.34	0.54
D	0.059	0.067	1.50	1.70
E	0.059	0.067	1.50	1.70
F	0.035	0.043	0.90	1.10
G	0.020	-	0.50	-
H	0.031	0.039	0.78	0.98
J	0.010	0.014	0.25	0.35

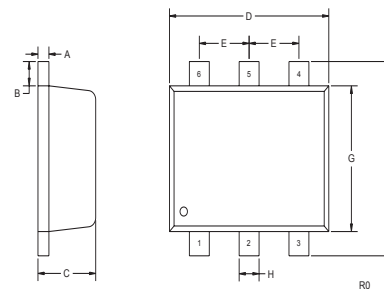
SOT-523 (REV: R2)

CMU5H05-4
LEAD CODE:

- 1) ANODE
- 2) ANODE
- 3) CATHODE

MARKING CODE: U54

SOT-563



SYMBOL	INCHES		MILLIMETERS	
	MIN	MAX	MIN	MAX
A	0.004	0.007	0.10	0.18
B	0.008	-	0.20	-
C	0.022	0.024	0.56	0.60
D	0.059	0.067	1.50	1.70
E	0.020	-	0.50	-
F	0.061	0.067	1.55	1.70
G	0.047	-	1.20	-
H	0.006	0.012	0.15	0.30

SOT-563 (REV: R0)

CML5H05-4
LEAD CODE:

- 1) CATHODE
- 2) CATHODE
- 3) ANODE
- 4) ANODE
- 5) CATHODE
- 6) CATHODE

MARKING
CODE: C54

CML5H05-4DO
LEAD CODE:

- 1) ANODE D1
- 2) NC
- 3) CATHODE D2
- 4) ANODE D2
- 5) NC
- 6) CATHODE D1

MARKING
CODE: C04

For complete package details, please visit:
www.centalsemi.com/packageDetails

CentralTM
Semiconductor Corp.

Innovations in Discrete
Semiconductors

For further information contact:
Sales at Central Semiconductor Corp.
(631) 435-1110 or visit our website at:
www.centalsemi.com

145 Adams Avenue • Hauppauge • New York • 11788 • USA • Tel:(631) 435-1110 • Fax: (631) 435-1824

PA SH05-4 Series